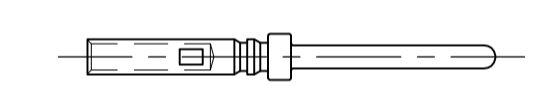
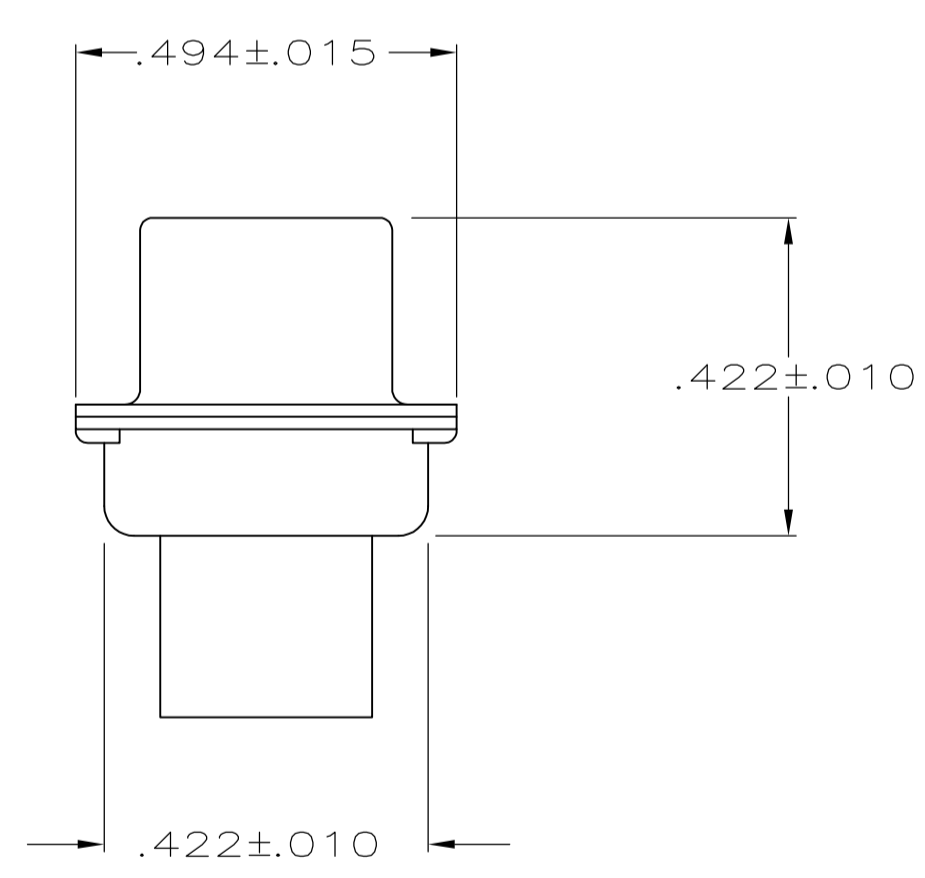


1. THIS PLUG WILL MATE WITH ANY RECEPTACLE CONNECTOR WITH THE SAME INSERT ARRANGEMENT AS DEFINED BY MS18274-2.
2. MAXIMUM WIRE INSULATION USED WITH THIS PLUG IS .054 DIA.
3. Be-Cu RETENTION CLIPS ARE INCLUDED IN INSERTS.
4. UL/CSA DESIGNATION STAMPED IN THIS AREA, OPTIONAL.
5. INSPECTION REQUIREMENTS PER R4383.
6. CONNECTOR SUPPLIED WITH 29 CONTACTS, AMP PART NUMBER 204370-8.
7. CUSTOMER PART NUMBER MAY BE SPLIT BETWEEN FRONT AND REAR SHELLS, SAME SIDE.
8. 36 CONTACTS, AMP PART NUMBER 204370-8, SUPPLIED WITH EACH CONNECTOR.
9. CONNECTOR LOADED WITH POSTED CONTACTS, INSPECTION REQUIREMENTS PER GENERAL ELECTRIC DOCUMENT 20025720.
10. RESTRICTED TO CAE ELECTRONICS ONLY.
11. THESE CONNECTORS ARE QUALIFIED TO GODDARD SPACE FLIGHT CENTER SPECIFICATION S-311-P-4.
12. CONNECTOR LOADED WITH POSTED CONTACTS.



CONTACT P/N 204370-8
 GSFC G-08-P1
 (SUPPLIED WITH 206500-6 AND 206500-8 ONLY)



12	.120	570566-8	1-206500-2	1-206500-2
11/10	.120	-	1-206500-1	1-206500-1
9	.120	311P407-2P-B-12	206500-4	1-206500-0
8	.120	20025720P2026P	206500-9	206500-9
	.120	3261113-9	206500-8	206500-8
6	.154	1622251-004	206500-7	206500-7
5	.120	R4383P26P	206500-6	206500-6
11	.120	R4383P26P-2	206500-5	206500-5
	.120	311P407-2P-B-12	206500-4	206500-4
	.154		206500-3	206500-3
11	.120	R9259P26P	206500-2	206500-2
	.154	311P407-2P-B-15	206500-1	206500-1
REMARKS	DIA A	MARKED CUSTOMER P/N	MARKED AMP P/N	AMP PART NUMBER

THIS DRAWING IS A CONTROLLED DOCUMENT.

APPROVED: P. YEAGER, 02OCT2008
 CHK: D. MILLER, 05OCT08
 NAME: D. MILLER, 05OCT08

TOLERANCES UNLESS OTHERWISE SPECIFIED:
 0. PLC ± -
 1. PLC ± -
 2. PLC ± -
 3. PLC ± .005
 4. PLC ± -
 ANGLES ± -

APPLICABLE SPEC: PRODUCT SPEC

SIZE: A1, CAGE CODE: 00779, DRAWING NO: 206500, RESTRICTED TO: -

WEIGHT: -

CUSTOMER DRAWING

SCALE: 4:1, SHEET: 1 of 1, REV: AC

Tyco Electronics Corporation
 Harrisburg, PA 17105-3608

PLUG FOR SOCKET CONTACTS
 HI-DENSITY D, 26 POSN, SIZE 2
 NONMAGNETIC